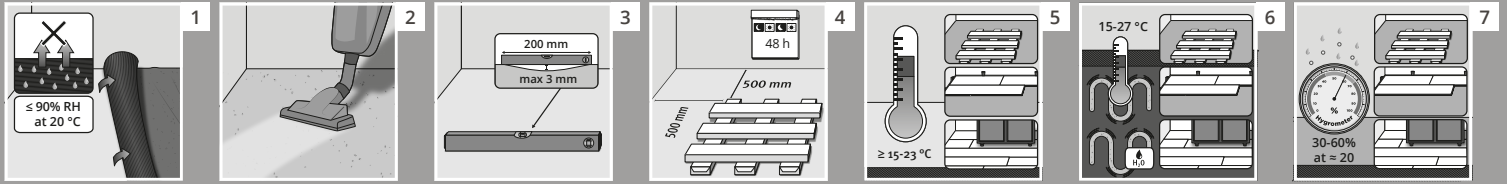


## **Installation Instructions**

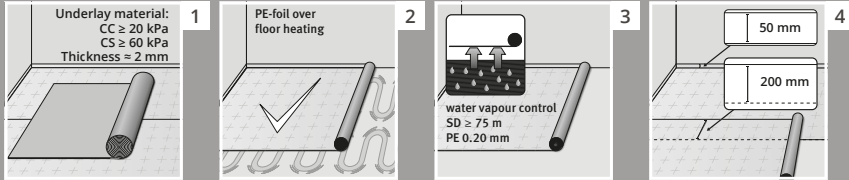
BJELIN CURED WOOD, PLANK  
Locking system 2G/5G®

# **BJELIN**

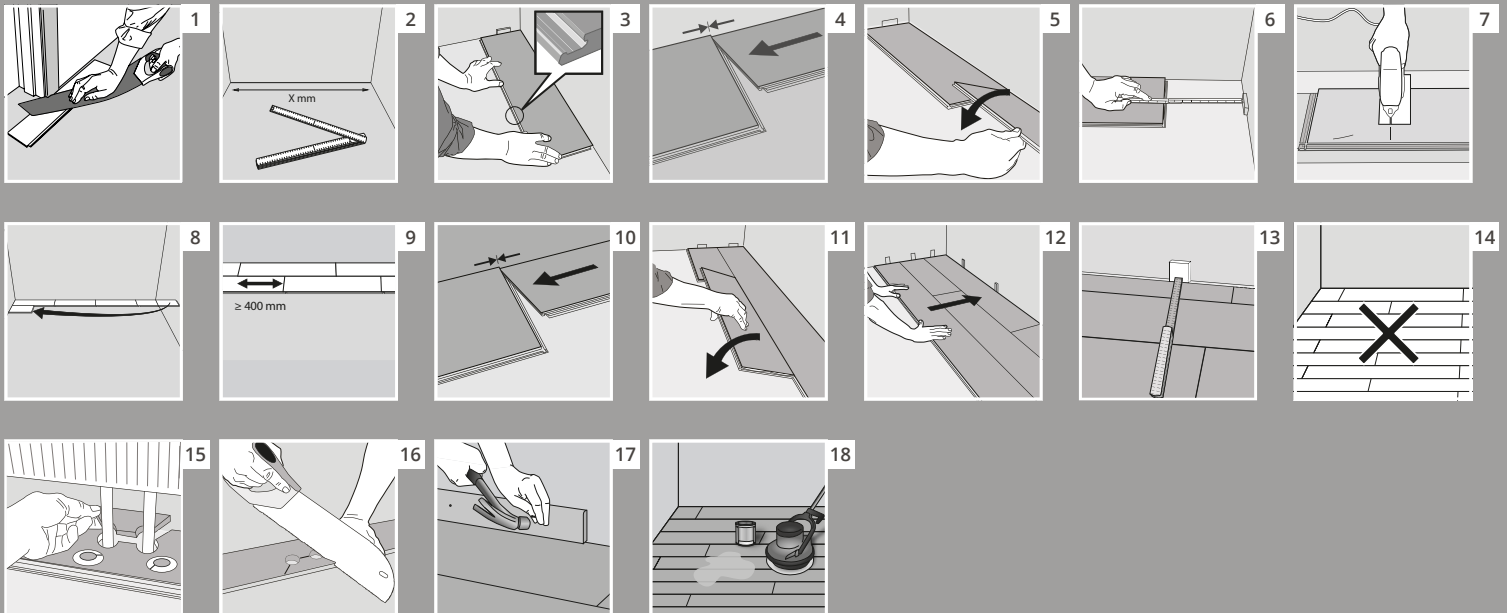
## 1. Installation preparations



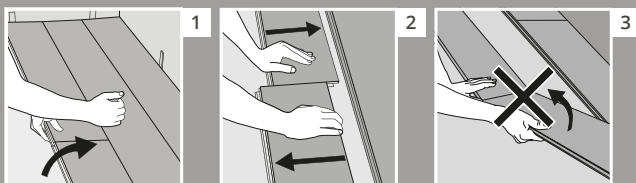
## 2. Subfloor - Preparations



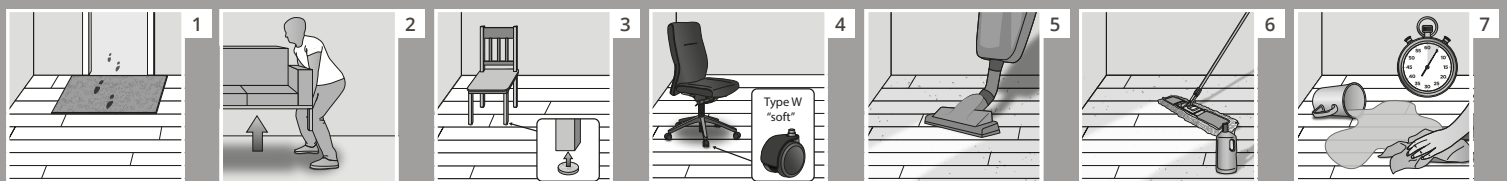
## 3. Floor Installation



## 4. Dismantling



## 5. Cleaning & Maintenance



## Installation instructions for the installation of Bjelin Cured Wood

Please read the installation instructions carefully. If you have any questions, please contact your distributor or Bjelin.

### Prerequisites and Expansion Joints

Maximum floor area: 625 m<sup>2</sup>  
Maximum floor width: 25 m

In normally furnished, symmetrical (square or rectangular) floor spaces, the maximum floor area is 625 m<sup>2</sup>. Expansion joints are to be installed and covered with joint strips between adjoining rooms, for thresholds, in L, T or U-shaped rooms, at transitions in corridors, etc. Never install kitchen cupboards, heavy kitchen islands, ovens/stoves and other heavy fittings such as stoves, safes, etc. on the floor.

### Wall distances & expansion joints

It is important to calculate the correct wall distance. The wall distance is calculated at 1.5 mm per width metre. Use spacer wedges that correspond to your calculated wall distance.

Sample calculation: A room 4 m wide is calculated as  $4 \times 1.5 = 6$  mm. In other words, the wall distance is to be at least 6 mm along the wall all around the room.

The expansion joint between adjoining rooms must be the same as the wall distance but be at least 20 mm.

### Recommended tools

- Spacer wedges
- Handsaw or jigsaw
- Pencil
- Folding rule
- Carpenter square
- Knife

The best way of cutting Cured wood is with our selected accessories for wood from Bosch, e.g. Jigsaw blade T101B, T101AO or circular saw blade EXP WOOD.

### Cosmetic Flaws Policy

If there is any doubt about quality, sorting or damage, it is important that a complaint is made before you lay the floor. If this is the case, please take a note the plank's production number which you will find on the short side of the planks tongue and then contact Bjelin. Once a floor plank has been installed, whether you are laying the floor yourself or engaging a craftsman, you are considered to have approved it as a purchaser. **Installed plank = approved plank.**

The instructions below give a more detailed description of the illustrations on page 2.

## Installation preparations

- 1.1 The floor should only be installed after fixed furniture installations have been completed (e.g. kitchen cabinets). Remove all wall-to-wall carpeting and inspect the subfloor. It must be dry, even and firm. Any unevenness, such as paint, screed, etc. must be removed. If the subfloor is made of concrete, the subfloor must have a relative humidity (RH) of 90% or less at 20°C before installation.
- 1.2 Vacuum the subfloor.
- 1.3 Check the evenness of the subfloor. Deviations must not exceed 3 mm in total over 2 m in transverse or longitudinal direction.
- 1.4 Place the floor packs in the room where they are to be installed. To allow the floor to acclimatise to room conditions, place the unopened packs apart from each other and at least 0.5 m from the walls for at least 48 hours.
- 1.5 We recommend that you keep the room temperature between 15-23°C before, during and after installation.
- 1.6 Our floors work well with underfloor heating. Foils with an age-resistant vapour barrier must be used for installation with underfloor heating. For further information, see point 2.2 and read GBR, The Swedish Flooring Trade Association:  
<https://www.golvbranschen.se/rad-riktlinjer/tragolv/tragolv-pa-golvvarme/>
- 1.7 The ambient climate for the floor should be 30-60% relative humidity (RH), on average (45-60%), at approximately 20°C. If the RH is low, small gaps can occur in the joints between the floor boards, which is best remedied with an indoor humidifier, especially during the heating season. Mix planks from several packs before installation to achieve the desired floor pattern.

## Subfloor – Preparations

- 2.1 For installation in rooms that do not have underfloor heating installed or requirements for a vapour barrier, an underlay foam must always be installed to level the subfloor. The recommended thickness of the underlay foam is approximately 2 mm. We recommend Bjelin Floor Underlay PO Foam.

## Underfloor heating

- 2.2 Our floors work very well with a range of underfloor heating systems. For installation with underfloor heating, foil with age-resistant vapour barrier must be used, see points 2.3 and 2.4. For a more detailed description of what applies, please refer to Golvbranschens (The Swedish Flooring Trade Association) guidelines for underfloor heating:  
<https://www.golvbranschen.se/media/3107/tragolv-pa-golvvarme-2-2005.pdf>

## Subfloors with vapour barrier requirements

- 2.3 A vapour barrier must always be installed over:
  - a. Floor structure with or without underfloor heating system.
  - b. Ventilated crawl space
  - c. Wet rooms where there is no vapour barrier, for example over a laundry room.
  - d. Lightweight concrete floor structures
  - e. Floor structures over warm or damp premises (e.g. boiler rooms or laundry rooms)

Remember not to lock in moisture in the floor structure. If in doubt, see information issued by Golvbranschens Riksorganisation (The Swedish Flooring Trade Association).

Requirements for vapour permeability factor (sd-value) must be above 75 [m]. Bjelin recommends Age-resistant PE foil (LDPE) 0.20 mm or Bjelin Floor underlay PO Combi foam. Combi foam is a PE foil laminated with a underlay foam. For installation with combi foam that is not from Bjelin it is important to check that the sd value is above 75 [m].

## Vapour barrier installation

- 2.4** The PE foil should be folded up about 50 mm along all walls (collar principle) to be ultimately cut to the correct size along skirtings. If PE foil is used, it must be overlapped by 200 mm, otherwise the joints must be taped with age-resistant sealing tape (Bjelin recommends: T-Flex Sealing Tape). When installing with combi foam, the laminated side is to lie face down on the subfloor.

## Floor Installation

- 3.1** Start by picking/sawing off the door lining so that you can slide the floor under the skirtings for a neat finish.
- 3.2** Measure the width and length of the room, calculate so that the first and last row of planks are about the same so that the last plank is not too small.
- 3.3-5** The floor is installed by angling the long sides to each other and clicking the short sides together. Floor underlays; it is a good idea to use Bjelins underlay foam with or without vapour barrier depending on the subfloor. Bjelin foam is 2 mm thick and reduces impact noise and minor unevenness in the subfloor. Read more about floor underlay in point 2.1-4.
- 3.6-9** The shortest plank is to be at least 300 mm. The short side joints must be offset by at least 400 mm to each other.
- 3.10-12** Install three rows and make sure you maintain the correct wall distance. Install the remaining floor. Use spacers to ensure that you maintain the correct wall distance. For more information about wall distances, see the "Wall distances & expansion joints" section.
- 3.13** For the last and final row, it is again important to check that the wall distance is correct. The wall distance must always be at least 1.5 mm per width metre on all sides.
- 3.14** Laying patterns, lay the strips randomly in order to avoid a general joint, i.e. where every other or third plank is aligned with each other's short side which produces a line in the floor that many find unnatural. There should be at least three rows of strips in between before the same joint reappears.
- 3.15** Installation around radiator pipes.
- 3.16** Drill a hole 20 mm larger than the pipe diameter.
- 3.17** Assemble the skirtings. Remember to never attach the skirtings directly to the floor.
- 3.18** A floor with a hard wax oiled surface shall always be treated with an installation oil. If you have installed a matt lacquered floor, no initial treatment of the surface is required.

In a home environment, the maintenance oil Osmo 3079 is recommended, which is applied with a utility pad holder with a white pad. For heavily trafficked areas in home, public or shop environments, hard wax oiled floors must be treated with a hard wax oil, Bjelin recommends Osmo 3062 which is applied with a polisher with a white pad. The installation oil can give the floor a slightly different degree of gloss. Regardless of the product used for the installation treatment, always make sure to follow the operating instructions carefully.

## After installation

- Protective material must be able to allow moisture to pass through from underneath and must not discolour the finished floor surface. NOTE: Do not apply tape directly to the wood surface.

## Dismantling

- 4.1 The floor can be dismantled to enable the replacement of planks during installation. Carefully angle the whole row up along the long side.
- 4.2 Remove the short sides by sliding the boards apart horizontally. Start separating the boards that are furthest out in the row.
- 4.3 Separera inte kortsidorna genom att vinkla upp dem.

## Maintenance

A well-maintained floor lasts for many years. It is also important to protect the floor from, for example, gravel or heavy furniture that can scratch the surface.

- 5.1 Always place a sufficiently large door mat next to entrances.
- 5.2 Move furniture by lifting it into place – do not push/pull it across the floor.
- 5.3 Protect the floor by applying furniture pads to the furniture legs.
- 5.4 Office chair castors must be made of soft rubber type W, or run on a protective mat under the chair.

## Cleaning

- 5.5 Daily cleaning by wiping with a dry mop/vacuum is recommended.
- 5.6 If necessary, the floor can be wet wiped with a small amount of water and a pH-neutral detergent for wooden floors. Do not use soap when cleaning wooden floors as it may leave a greasy film over the floor and make cleaning more difficult.
- 5.7 Residual water after wet drying must self-dry within 2-3 minutes. Any spilled water must be removed immediately.

For more information about maintenance and care of floors, see [www.bjelin.se](http://www.bjelin.se) or contact Bjelin.

# woodura®

Woodura® is the patented technology that makes it possible to make wood stronger and to use the whole tree as a raw material. Sustainable for both you and our environment. The wooden surface is compressed under high heat with a wood fiber board coated with a wood powder mixture. The wooden surface is compressed and the wood powder penetrates from below. The result is a cured wood that is many times stronger and harder while maintaining the look and feel. With Woodura® you decorate with the most beautiful parts of the tree and the rest is used to make the floor last a long time.

