

# SCHOCK



ALTOS



[www.schock.de/easy-altos](http://www.schock.de/easy-altos)





PRODUKT SPECIFIKATION  
PRODUCT SPECIFICATIONS

(A) 529000



(B) 529120



Længde på tilslutningslanger  
Length of supply hoses



Gevindstørrelse  
Thread size of supply hose



Svingbar tud  
Swivel range

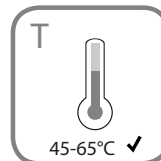
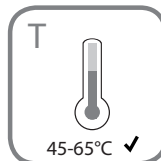
(A) 529000



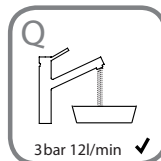
(B) 529120



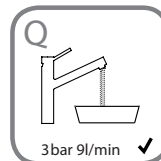
Vandtryk  
Water pressure



Temperatur  
Temperature



l/min →



l/min →

Vandgennemstrømning  
Water flow rate

## SCHOCK



### SIKKERHEDSANVISNINGER SAFETY NOTES

- DEU DIE GEWÄHRLEISTUNG VERFÄLLT BEI LAIENMONTAGE.  
SCHOCK EMPFIEHLT DIE VERWENDUNG DES GROBPARTIKELFILTERS SF-100 (629883).  
KEINEN CHLORREINIGER VERWENDEN.
- ENG THE WARRANTY IS VOIDED BY NON-PROFESSIONAL INSTALLATION.  
SCHOCK RECOMMENDS THE USE OF THE SF-100 (629883) COARSE PARTICLE FILTER.  
DO NOT USE CHLORINE-BASED CLEANING AGENTS.
- ES LA GARANTÍA CADUCA CUANDO EL MONTAJE NO ES REALIZADO POR PERSONAL ESPECIALIZADO.  
SCHOCK RECOMIENDA LA INSTALACIÓN DEL FILTRO CONTRA PARTÍCULAS GRUESAS SF-100 (629883).  
SE ADVIERTE NO UTILIZAR DETERGENTES QUE CONTENGAN CLORO.
- TR YETKİLİ KİŞİLERCE YAPILMAYAN MONTAJLARDA GARANTI GEÇERSİZ SAYILACAKTIR.  
SCHOCK SF-100 (629883) KALIN PARÇACIK FİLTRESİNİ KULLANMANIZI ÖNERİR.  
ASLA KLORLU TEMİZLEYİCİLER KULLANMAYINIZ.
- POL GWARANCJA TRACI WAŻNOŚĆ W PRZYPADKU NIEWŁAŚCIWEGO MONTAŻU. SCHOCK ZALECA UŻYCIĘ  
ZAWORU KĄTOWEGO Z FILTREM SF-100 (629883). NIE STOSOWAĆ ŚRODKÓW NA BAZIE CHLORU.
- DK GARANTIE BORTFALDER, HVIS INSTALLATIONEN IKKE ER FORETAGET AF EN AUTORISERET INSTALLATØR.  
SCHOCK ANBEFALER ANVENDELSE AF SF-100 (629883) GROFT PARTIKEL FILTER  
BENYT IKKE KLOR BASERET RENGØRINGSMIDDEL.



VÆRKTØJ  
TOOLS



19 mm





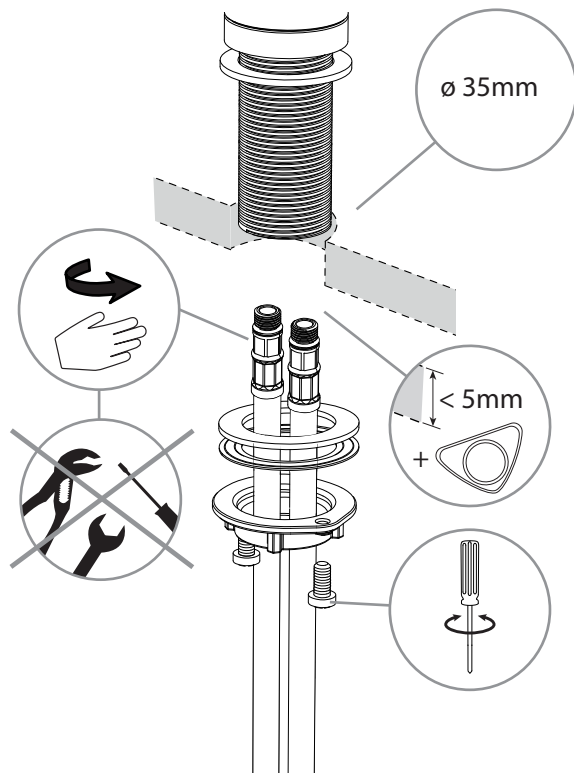
## INSTALLATION INSTALLATION

## SCHOCK

1

A 529000

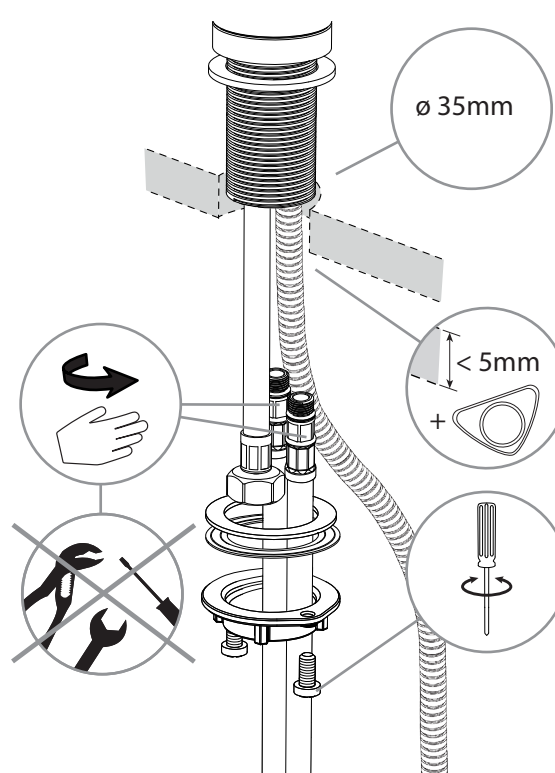
Fastspænd tilslutningslanger - med håndkraft  
Hand - tighten supply hoses



1

B 529120

Fastspænd tilslutningslanger - med håndkraft  
Hand - tighten supply hoses

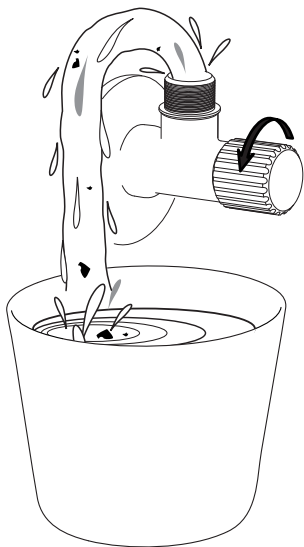




## INSTALLATION INSTALLATION

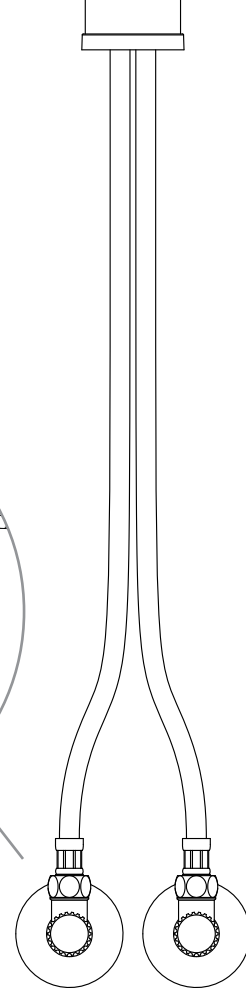
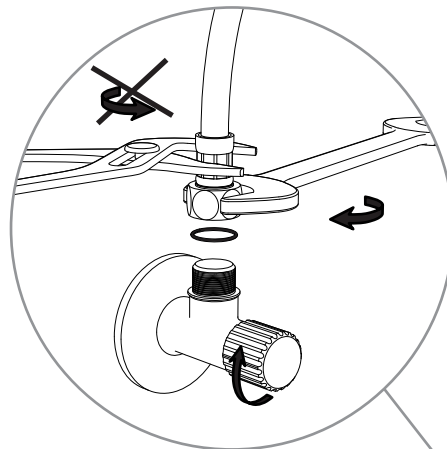
2

Skyl rørsystemet igennem før tilslutning til armatur  
Flush piping system before installation of fitting thoroughly



3

Fastspænd tilslutningslanger på vinkelventiler  
Screw supply hoses onto angle valves



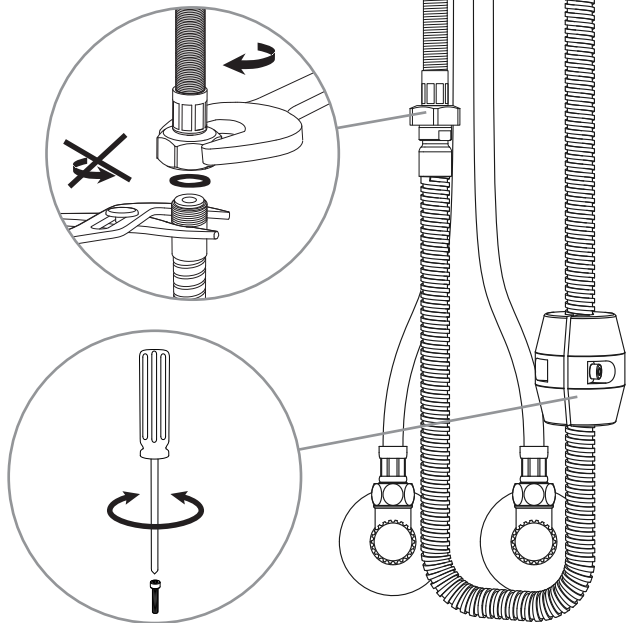


## INSTALLATION INSTALLATION

4

(B) 529120

Fastspænd  
Tighten

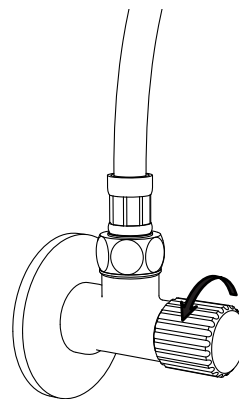


## SCHOCK

5

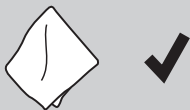
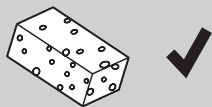
Tænd for vandforsyningen og kontroller tilslutningerne  
for lækage

Turn on water supplies and check connections for leaks



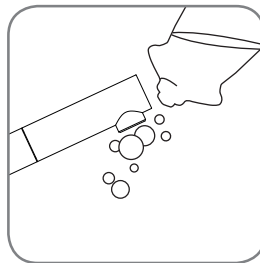


PLEJEPRODUKTER  
CARE PRODUCTS

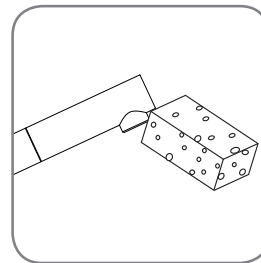


VEDLIGEHOELSESVEJLEDNING  
CARE INSTRUCTIONS

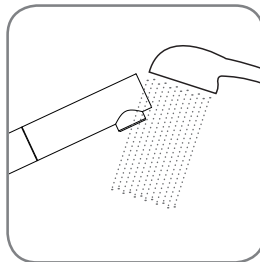
1.



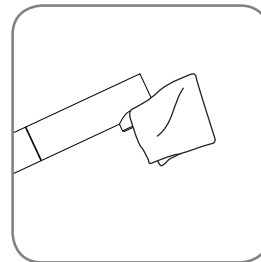
2.



3.



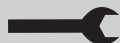
4.







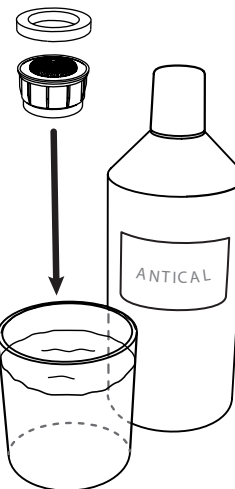
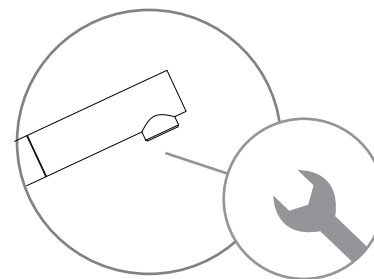
VÆRKTØJ  
TOOLS



22 mm



RENSNING AF PERLATOR  
CLEANING THE AERATOR



60 min



VÆRKTØJ  
TOOLS



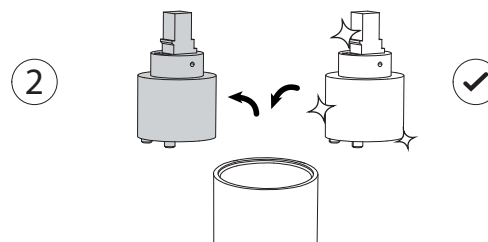
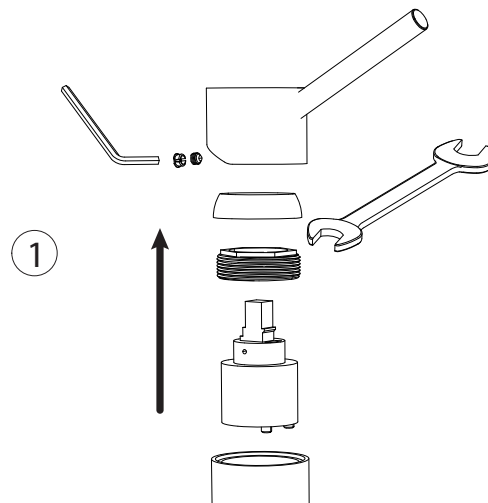
2,5 mm



30 mm



UDSKIFTNING AF KARTUCHE  
CHANGING THE CARTRIDGE



SCHOCK



WEBSHOP



[WWW.SCHOCK.DE/SHOP](http://WWW.SCHOCK.DE/SHOP)



RESERVEDELE  
SPARE PARTS

1 628740/1

---

2 628740/3

---

3 628740/2

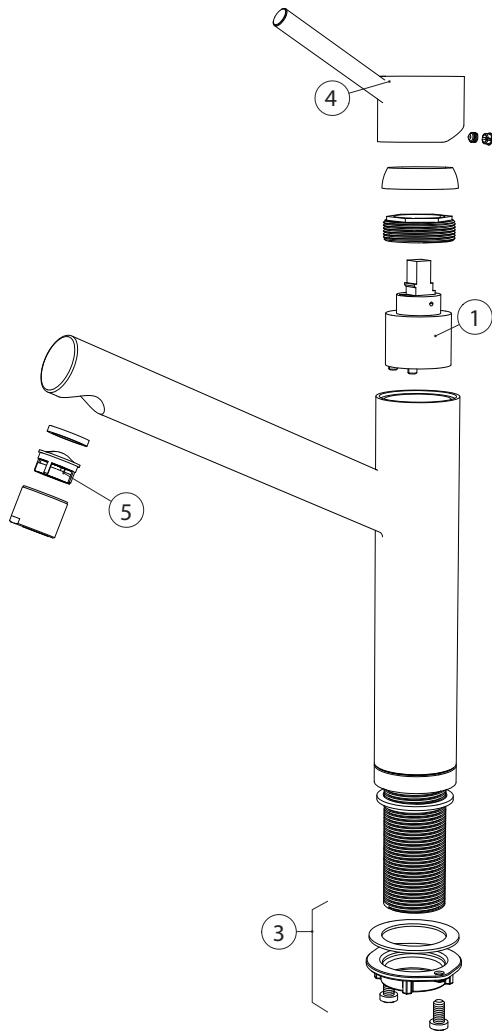
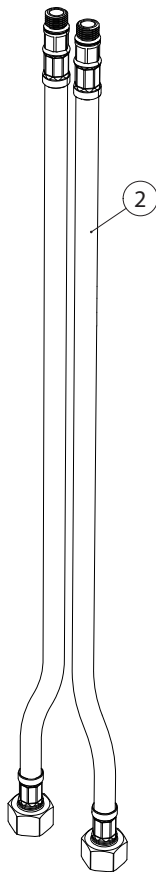
---

4 628740EDM

---

5 628740/5

---

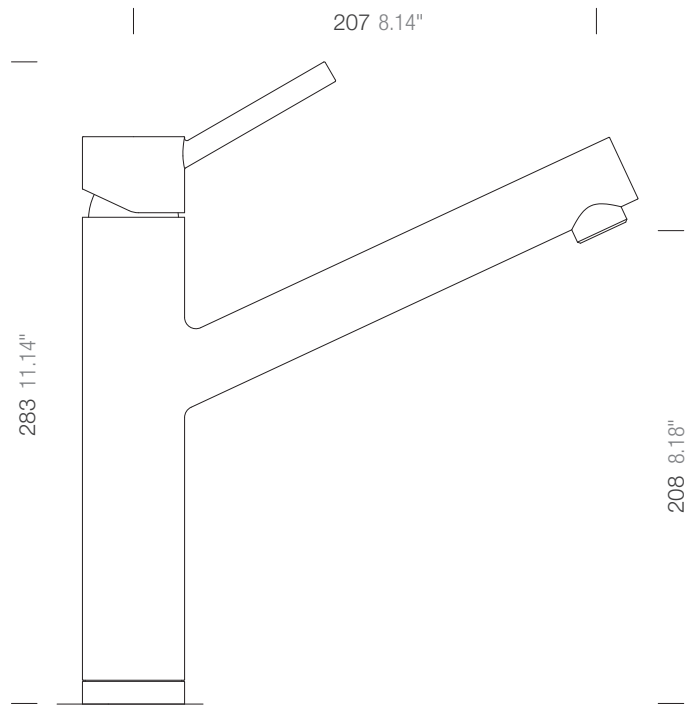




MÅL  
MEASUREMENTS

A 529000

## SCHOCK





1 628740/1

2 628740/3

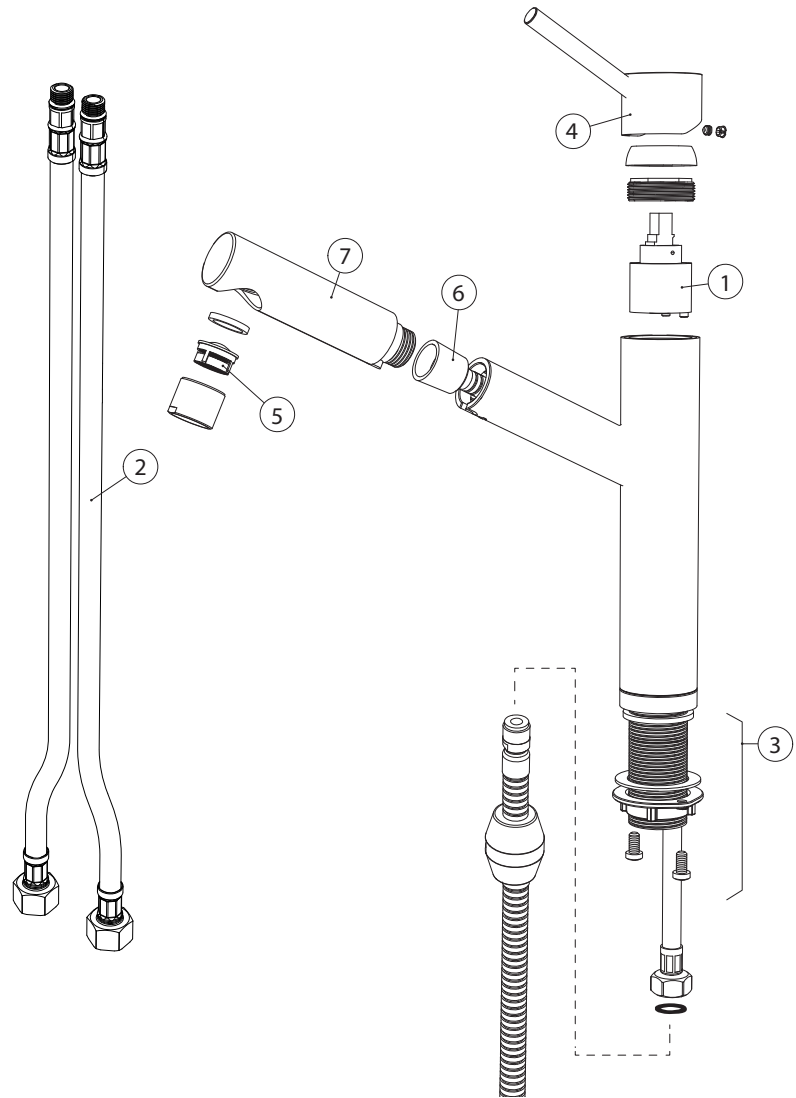
3 628740/2

4 628740EDM

5 628740/5

6 628740/4

7 628741EDM

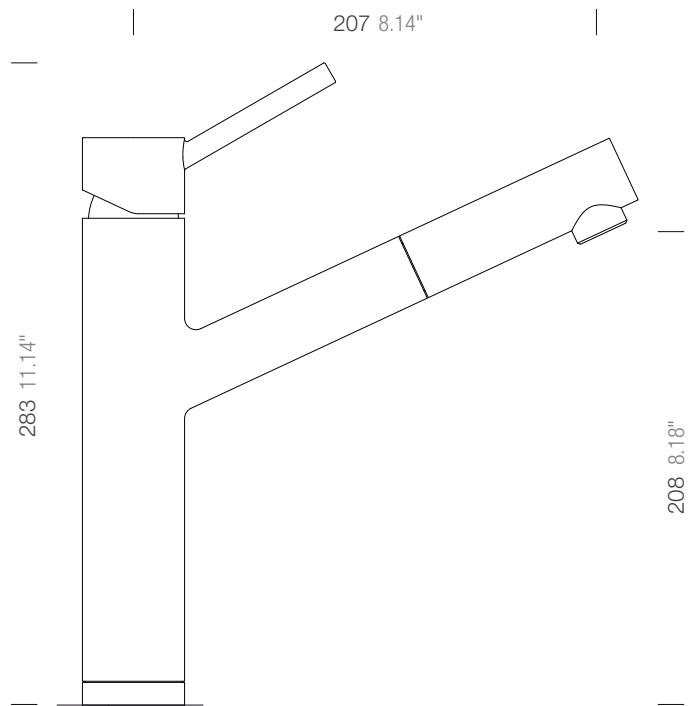




MÅL  
MEASUREMENTS

(B) 529120

## SCHOCK





[www.schock.de/service](http://www.schock.de/service)



[www.schock.de/shop](http://www.schock.de/shop)

SCHOCK GmbH • Hofbauerstr. 1 • D-94209 Regen  
Telefon: +49-9921-600-0 • Fax: +49-9921-600-253

Email: [info@schock.de](mailto:info@schock.de) • [www.schock.de](http://www.schock.de)