

SCHOCK



SIMI
505000



www.schock.de/easy-simi





PRODUKTSPICIFIKATION PRODUCT SPECIFICATIONS



430
17"
Længde på tilslutningslanger
Length of supply hoses



$\frac{3}{8}$ "
Gevindstørrelse
Thread size of supply hose



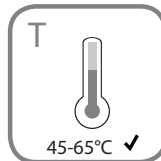
360°
Svingbar tud
Swivel range



Vandtryk
Water pressure



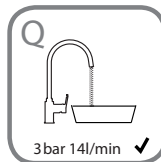
0,5 max 10



Temperatur
Temperature



max 80



Vandgennemstrømning
Water flow rate

l/min →

SCHOCK



SIKKERHEDSANVISNINGER SAFETY NOTES

- DEU DIE GEWÄHRLEISTUNG VERFÄLLT BEI LAIENMONTAGE.
SCHOCK EMPFIEHLT DIE VERWENDUNG DES GROBPARTIKELFILTERS SF-100 (629883).
KEINEN CHLORREINIGER VERWENDEN.
- ENG THE WARRANTY IS VOIDED BY NON-PROFESSIONAL INSTALLATION.
SCHOCK RECOMMENDS THE USE OF THE SF-100 (629883) COARSE PARTICLE FILTER.
DO NOT USE CHLORINE-BASED CLEANING AGENTS.
- ES LA GARANTÍA CADUCA CUANDO EL MONTAJE NO ES REALIZADO POR PERSONAL ESPECIALIZADO.
SCHOCK RECOMIENDA LA INSTALACIÓN DEL FILTRO CONTRA PARTÍCULAS GRUESAS SF-100 (629883).
SE ADVIERTE NO UTILIZAR DETERGENTES QUE CONTENGAN CLORO.
- TR YETKİLİ KİŞİLERCE YAPILMAYAN MONTAJLARDA GARANTI GEÇERSİZ SAYILACAKTIR.
SCHOCK SF-100 (629883) KALIN PARÇACIK FİLTRESİNİ KULLANMANIZI ÖNERİR.
ASLA KLORLU TEMİZLEYİCİLER KULLANMAYINIZ.
- POL GWARANCJA TRACI WAŻNOŚĆ W PRZYPADKU NIEWŁAŚCIWEGO MONTAŻU. SCHOCK ZALECA UŻYCIIE
ZAWORU KĄTOWEGO Z FILTREM SF-100 (629883). NIE STOSOWAĆ ŚRODKÓW NA BAZIE CHLORU.
- DK GARANTIEBORTFALDER, HVIS INSTALLATIONEN IKKE ER FORETAGET AF EN AUTORISERET INSTALLATØR
SCHOCK ANBEFALER ANVENDELSE AF SF-100 (629883) GROFT PARTIKEL FILTER
BENYT IKKE KLOR BASERET RENGØRINGSMIDDEL.



VÆRKTØJ
TOOLS



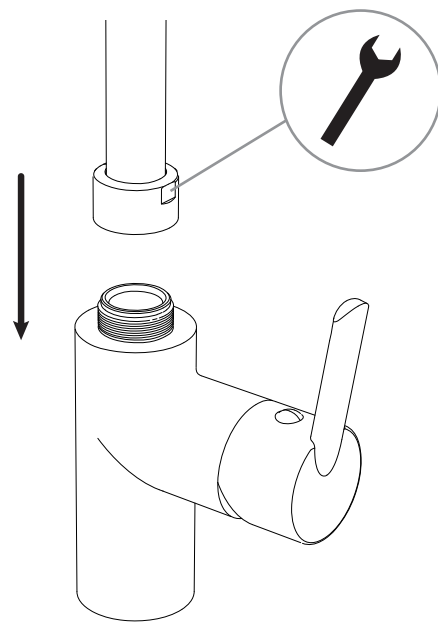
12 mm
19 mm
28 mm



INSTALLATION
INSTALLATION

1

Fastgør tuden til kroppen. Møtrikken skal være fastspændt
Fasten spout to tap body. Ensuring nut is tight.

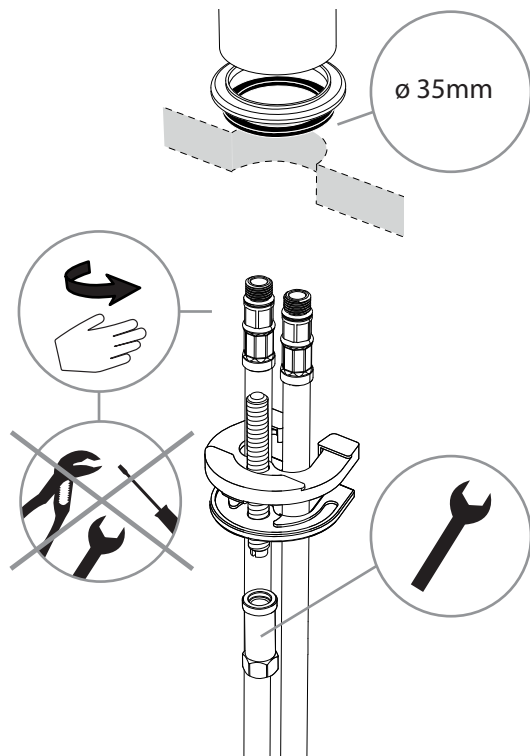




INSTALLATION INSTALLATION

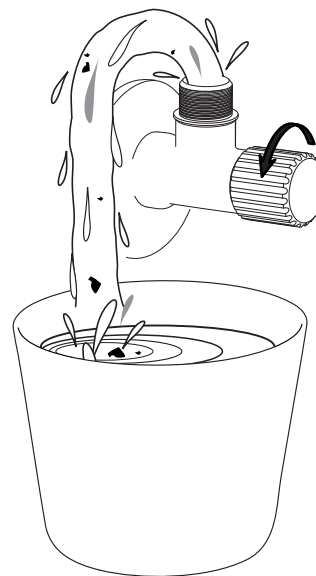
2

Fastspænd tilslutningslanger - Med håndkraft
Hand - tighten supply hoses



3

Skyl rørsystemet igennem før tilslutning til armatur
Flush piping system before installation of fitting thoroughly

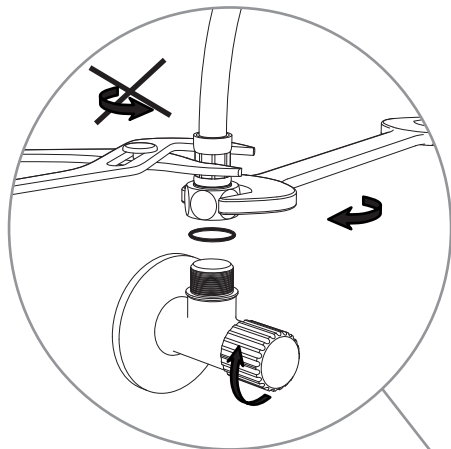




INSTALLATION INSTALLATION

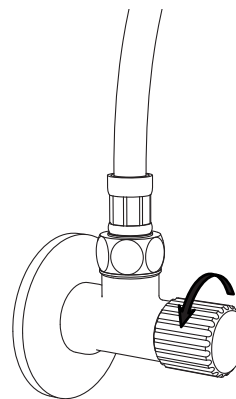
4

Fastspænd tilslutningslanger på vinkelventiler
Screw supply hoses onto angle valves



5

Tænd for vandforsyningen og kontroller tilslutningerne for lækage
Turn on water supplies and check connections for leaks





VÆRKTØJ
TOOLS



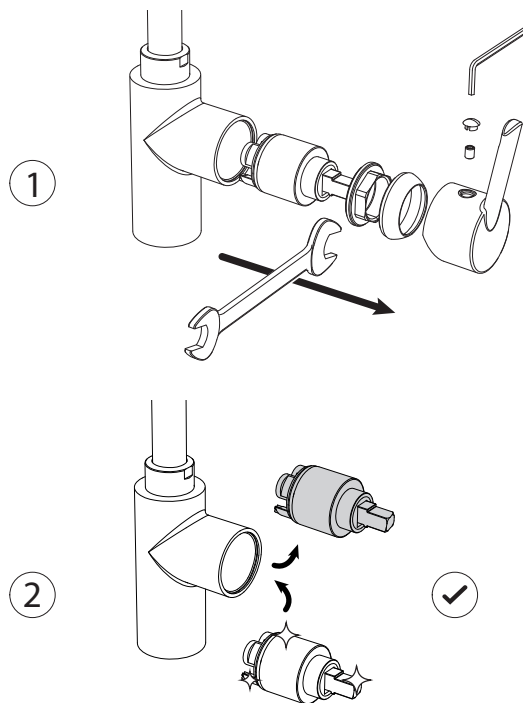
2,5 mm



27 mm

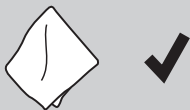
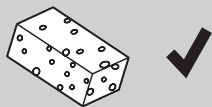


UDSKIFTNING AF KARTUCHE
CHANGING THE CARTRIDGE

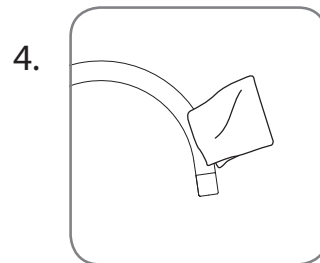
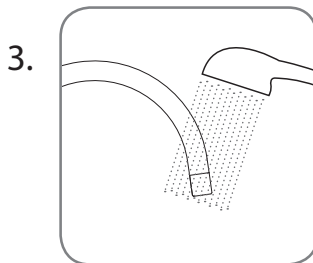
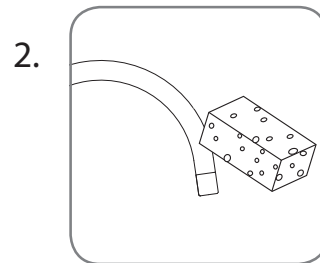
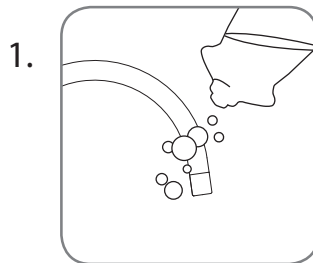




PLEJEPRODUKTER
CARE PRODUCTS



VEDLIGEHOJDELSEVEJLEDNING
CARE INSTRUCTIONS



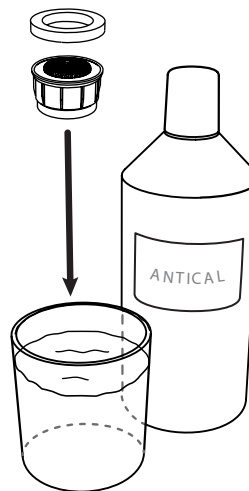
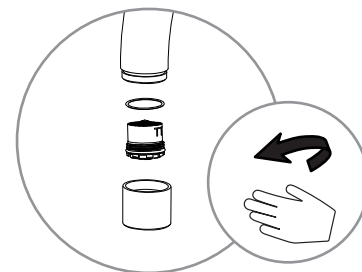


VÆRKTØJ
TOOLS

Der er ikke brug for værktøj
No tools needed



RENSNING AF PERLATOR
CLEANING THE AERATOR



60 min



RESERVEDELE
SPARE PARTS

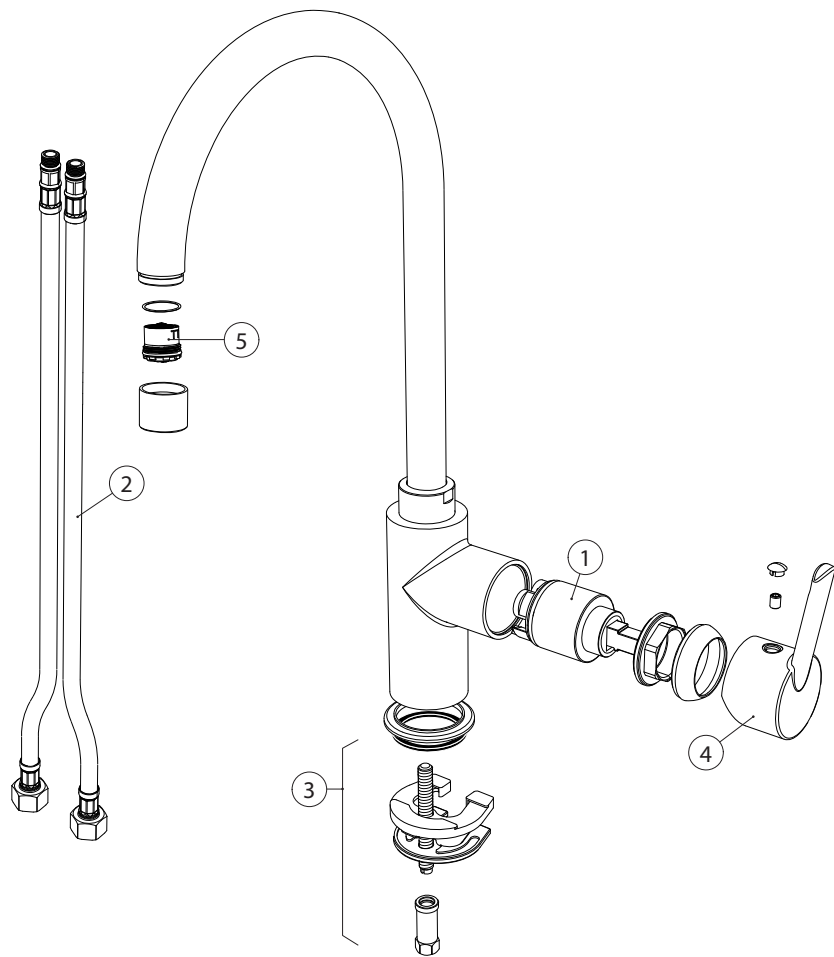
1 628714/1

2 628673/3

3 628714/6

4 628714CHR

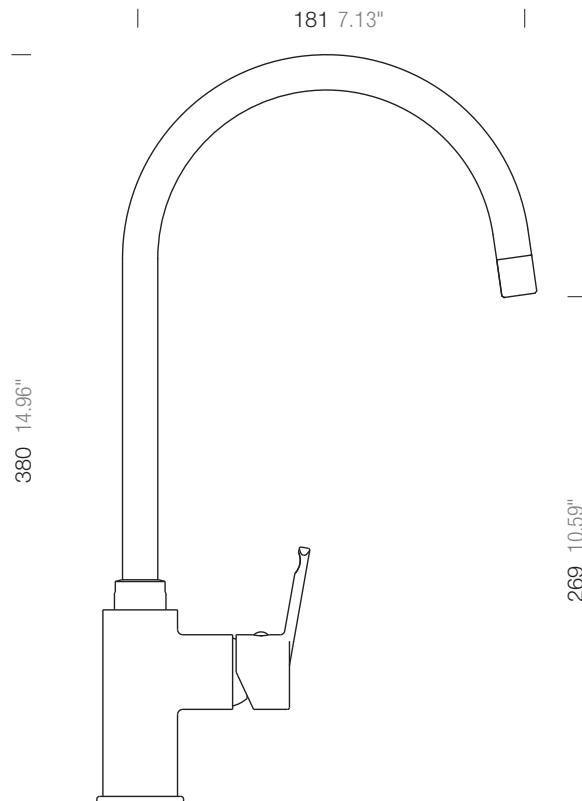
5 628714/2





MÅL
MEASUREMENTS

SCHOCK





www.schock.de/service



www.schock.de/shop

SCHOCK GmbH • Hofbauerstr. 1 • D-94209 Regen
Telefon: +49-9921-600-0 • Fax: +49-9921-600-253

Email: info@schock.de • www.schock.de