

SCHOCK



SONO
504000



www.schock.de/easy-sono





PRODUKT SPECIFIKATION PRODUCT SPECIFICATIONS



Længde på tilslutningslanger
Length of supply hoses



Gevindstørrelse
Thread size of supply hose



Svingbar tud
Swivel range

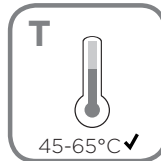
SCHOCK



Vandtryk
Water pressure



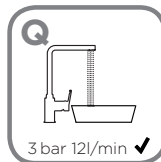
0,5 max 10



Temperatur
Temperature



°C max 80



Vandgennemstrømning
Water flow rate

l/min →



SIKKERHEDSANVISNINGER SAFETY NOTES

- DEU** DIE GEWÄHRLEISTUNG VERFÄLLT BEI LAIENMONTAGE.
SCHOCK EMPFIEHLT DIE VERWENDUNG DES GROBPARTIKELFILTERS SF-100 (629883).
KEINEN CHLORREINIGER VERWENDEN.
- ENG** THE WARRANTY IS VOIDED BY NON-PROFESSIONAL INSTALLATION.
SCHOCK RECOMMENDS THE USE OF THE SF-100 (629883) COARSE PARTICLE FILTER.
DO NOT USE CHLORINE-BASED CLEANING AGENTS.
- ES** LA GARANTÍA CADUCA CUANDO EL MONTAJE NO ES REALIZADO POR PERSONAL ESPECIALIZADO.
SCHOCK RECOMIENDA LA INSTALACIÓN DEL FILTRO CONTRA PARTÍCULAS GRUESAS SF-100 (629883).
SE ADVIERTE NO UTILIZAR DETERGENTES QUE CONTENGAN CLORO.
- TR** YETKILI KIŞILERCE YAPILMAYAN MONTAJLARDA GARANTI GEÇERSİZ SAYILACAKTIR.
SCHOCK SF-100 (629883) KALIN PARÇACIK FİLTRESİNİ KULLANMANIZI ÖNERİR.
ASLA KLORLU TEMİZLEYİCİLER KULLANMAYINIZ.
- POL** GWARANCJA TRACI WAŻNOŚĆ W PRZYPADKU NIEWŁAŚCIWEGO MONTAŻU. SCHOCK ZALECA UŻYCIE
ZAWORU KĄTOWEGO Z FILTREM SF-100 (629883). NIE STOSOWAĆ ŚRODKÓW NA BAZIE CHLORU.
- DK** GARANTIEN BORTFALDER, HVIS INSTALLATIONEN IKKE ER FORETAGET AF AUTORISERET INSTALLATØR.
SCHOCK ANBEFALER ANVENDELSE AF SF-100 (629883) GROFT PARTIKEL FILER.
BENYT IKKE KLOR BASERET RENGØRINGSMIDLER.



VÆRKTØJ TOOLS



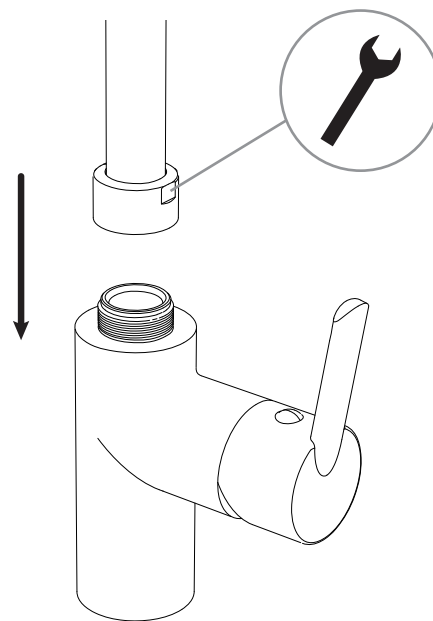
12 mm
19 mm
28 mm



INSTALLATION INSTALLATION

1

Fastgør tuden til kroppen. Kontroller møtrikken er fastspændt
Fasten spout to tap body. Ensuring nut is tight.



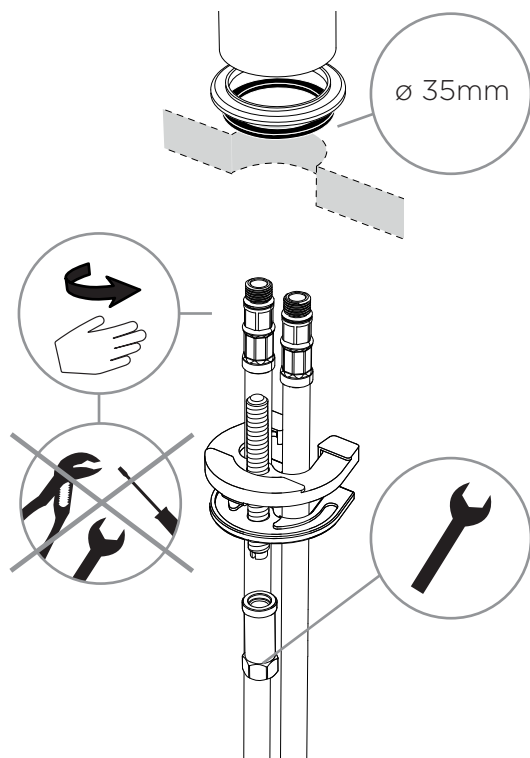


INSTALLATION INSTALLATION

2

Fastspænd tilslutningslanger - Med håndkraft

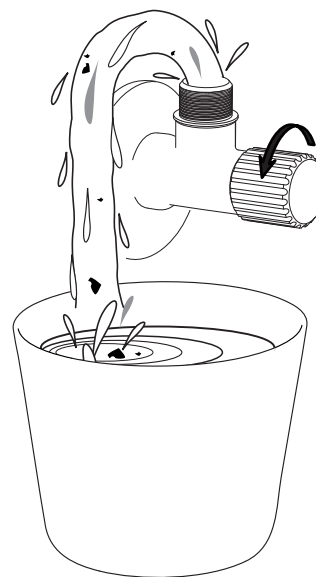
Hand - tighten supply hoses



3

Skyl rørsystemet igennem før tilslutning til armatur

Flush piping system before installation of fitting thoroughly



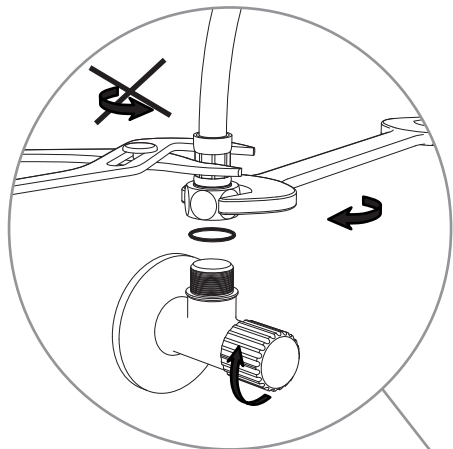


INSTALLATION INSTALLATION

4

Fastspænd tilslutningsslanger på vinkelventiler

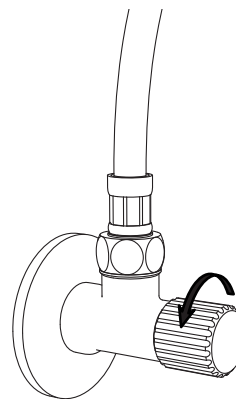
Screw supply hoses onto angle valves



5

Tænd for vandforsyningen og kontroller tilslutningerne for lækage

Turn on water supplies and check connections for leaks





VÆRKTØJ TOOLS



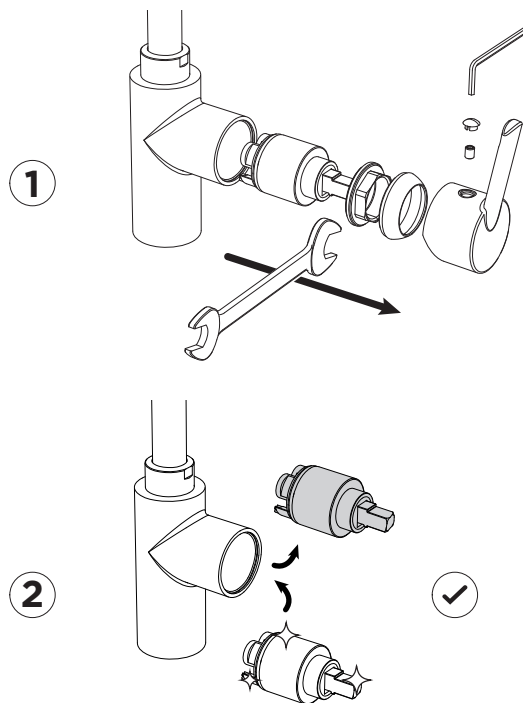
2,5 mm



27 mm

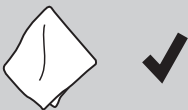
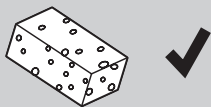


UDSKIFTNING AF KARTUCHE CHANGING THE CARTRIDGE



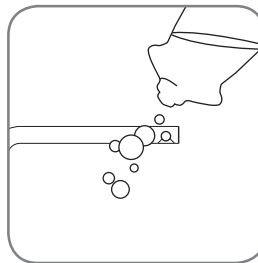


PLEJEPRODUKTER
CARE PRODUCTS

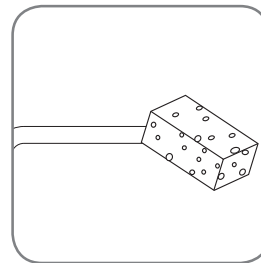


VEDLIGEHOLDELSERVEJLEDNING
CARE INSTRUCTIONS

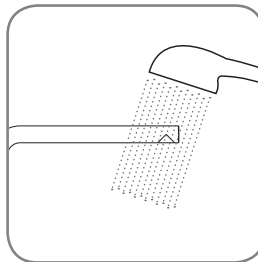
1.



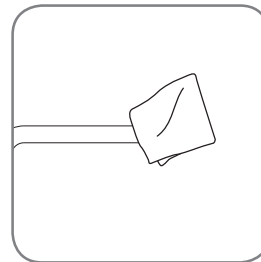
2.



3.



4.

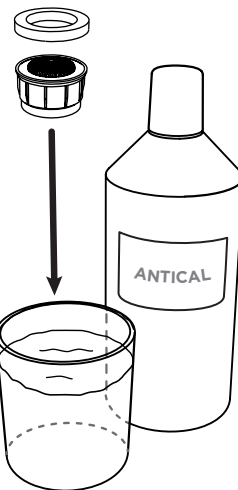
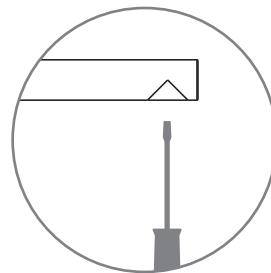




VÆRKTØJ
TOOLS



RENSNING AF PERLATOR
CLEANING THE AERATOR



60 min



RESERVEDELE SPARE PARTS

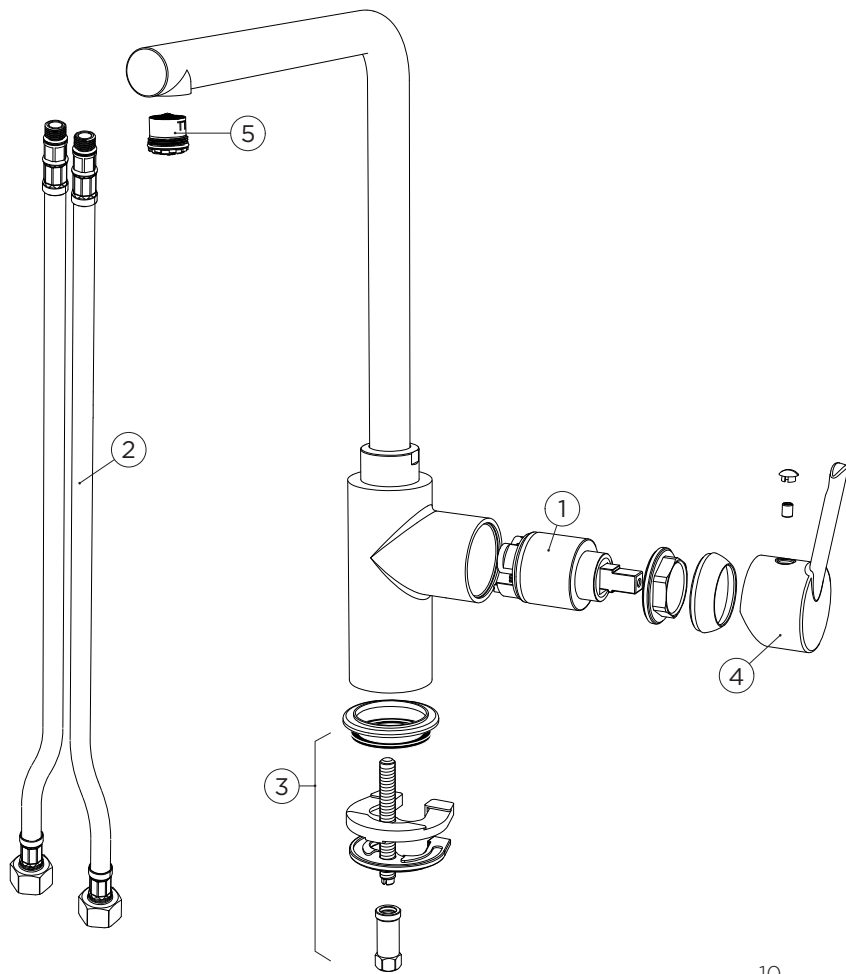
1 628714/1

2 628673/3

3 628714/6

4 628714CHR

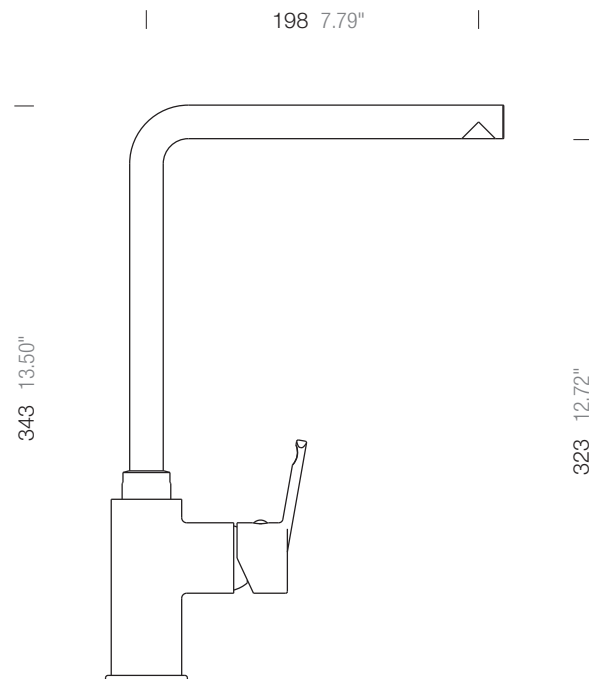
5 628714/5





MÅL
MEASUREMENTS

SCHOCK





www.schock.de/service



www.schock.de/shop

SCHOCK GmbH • Hofbauerstr. 1 • D-94209 Regen
Telefon: +49-9921-600-0 • Fax: +49-9921-600-253

Email: info@schock.de • www.schock.de