

LVT/SPC Herringbone Click Laying and maintenance instructions

Thank you for choosing LVT/SPC Click Herringbone. Follow the installation and maintenance instructions below for years of living pleasure.

GENERAL APPLICATION

LVT/SPC Click is a vinyl floor with click system for use in domestic living areas, which is laid floating and does not need to be glued. Measure the length and width (surface area) of the room. If the room has a bay window or extension, measure these separately. We recommend at least an additional 10% to cover cutting errors, cutting waste or future use. The temperature of the room should not fall below 10°C.

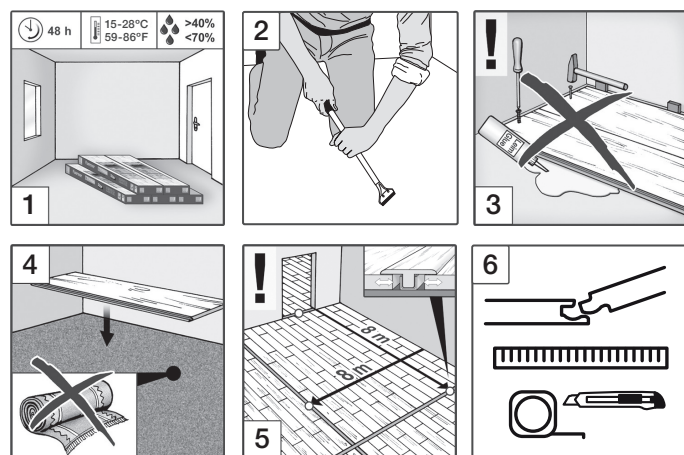
Before you start:

- Allow LVT/SPC Click to acclimatise for at least 48 hours in the room where it is to be laid under the same climatic conditions [1].
- Do not lay the floor at a room temperature lower than 15°C [1].
- The substrate for LVT/SPC Click must be hard, completely flat, load-bearing, tear-free and permanently dry (max. 2% moisture content).
- The substrate must also be clean and free of e.g. gypsum, paint or other unevenness in order to prevent any marks [2].
- Concrete substrate: it must be hard, completely flat and dry due to possible markings.
- Wood substrate: this must be hard, completely flat, dry due to possible penetration, level with wood fibreboards (make sure all grains, butts and any unevenness are filled and flat) Make sure the floor is smooth, clean and free of wax, oil, grease and dust.
- Subfloor of existing tiles: use a levelling subfloor
- Advice: use a subfloor that is suitable for processing a LVT/SPC Click floor, it is recommended to use a subfloor with > 400 KPA.
- A LVT/SPC Click floor is always laid floating and may not be glued, screwed, nailed or otherwise fastened to the subfloor [3].
- Carpet must always be removed and is not suitable as a substrate [4].
- PLEASE NOTE: If the laying surface is more than 8 metres in length or width, break joints (min. 2 cm in width) must be used. This must also be taken into account when laying in other rooms. In case of a door opening, the floor surface must be interrupted. Moving joints can be professionally covered with profiles [5].
- In case of doubt about the correct processing of the floor boards, do not continue laying, but first contact your purchase address for further advice. The final result strongly depends on the circumstances under which the floor boards have been laid.
- In the case of underfloor heating, the temperature of the subfloor must be below 28°C everywhere. The heating installation must be in operation for at least 4 weeks after the start-up protocol according to the supplier before the floor is laid in order to prevent shrinkage and expansion of the subfloor.
- Underfloor heating: This treatment only applies to underfloor heating based on hot water and to underfloor heating with cooling, provided it is fitted with a condensation protection device. Laying on electric underfloor heating is not recommended. LVT/SPC Click should not be installed on underfloor heaters installed before 1990. These systems generally produce too high temperatures.

What do you need (6):

Possible auxiliary materials:

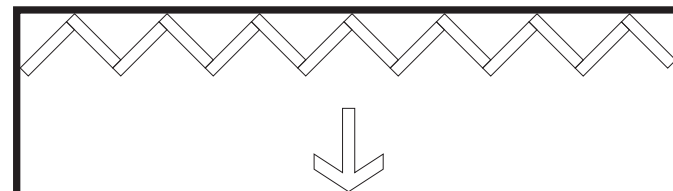
- Tape measure
- Pencil
- Sharp Stanley Knife
- Spacer blocks
- Rubber hammer
- Fixing block



The laying:

For optimum even distribution and the smallest possible cutting loss, lay out a blemish line that is adapted to the size of the strips/tiles to be processed. Make a working drawing in advance of how you are going to lay the strips/tiles in the room to be processed. When ordering the LVT/SPC floor, take into account a cutting loss of approximately 10% during installation. Keep at least one unbroken pack so that you can repair the floor with the same material in the event of an accident.

This suit contains right and left parts. Then you can start laying the herringbone floor.

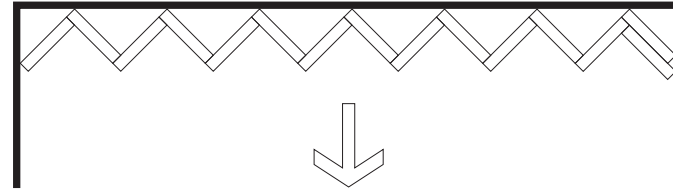


Place spacers between the short and long sides of the planks and the wall. Always place a spacer between the wall and where the planks come together. Keep a minimum distance of 1 cm between the wall and the planks.

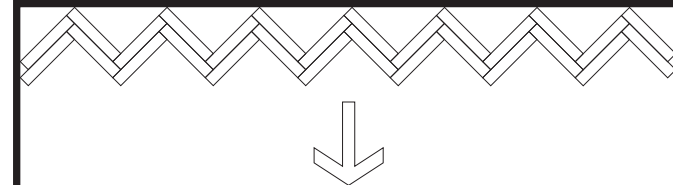
Start at the left side of the room and place the first panel against the spacers as shown in the drawing above. Then place the second panel with the groove on the short side at a short angle (45 degrees) to the first panel. Press the end of the LVT/SPC board down firmly until the boards click together. In order to secure the click joints firmly, after pressing them in place, hit them with a stopper block by hitting them with a rubber hammer.

Complete the entire row. The last panel can easily be made to measure using a stanley knife. When placing the last board in the row, keep the distance to the wall in eight of 1 cm, use a spacer.

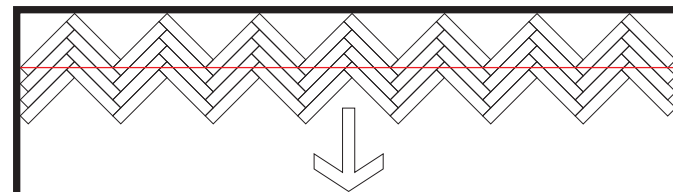
The first two rows must be laid straight and level. If this is not the case it will affect the entire installation of the floor.



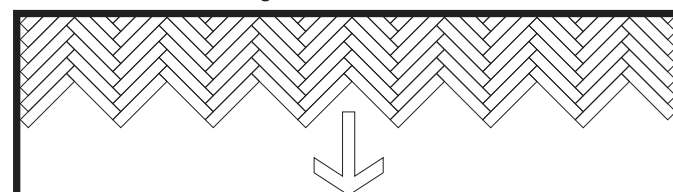
Now start laying the second row. Start at the right side. Place the panel, at a 45 degree angle, with the groove side in the knife side of the first row and press it firmly until the planks click together. Tap carefully with a rubber hammer and stopper block until the joint is closed.



Then finish the whole row and work from right to left. Make sure that the first rows are completely straight. Tighten a tick line to check that the panels are completely straight. When the first rows are completely straight the rest of the floor can be finished.



Continue laying the next row. After laying a number of rows, from 4 or 5 rows, cut the first rows straight.



Then these rows can be slid to the back, so that the cut side is straight at / on the wall.

Always check if the click connection is complete. If the connection is not complete, loosen the panel and put it back in place. Do not pull on the connection, as this may damage the click system. Then finish the entire floor, check the distance to the wall and remove the spacers. Now the floor can be finished with a skirting board.

Expansion joints

If the floor is extended to another room, or the room is longer than 10 metres, a mandatory dilatation joint must be taken into account. Cut the floor at doorways and place a dilatation strip. This allows the floor to 'work' in the placed space.

Sides and irregularities

Make the strips with a sharp stanley knife and ruler. Cut from above and break them off with caution. Irregular shapes, such as doorposts and heating pipes, can also be made in this way. A paper mould makes this easier.

Finishing

In damp rooms, we recommend that the floor be treated with polyurethane sealant for wall and sanitary connections. LVT/SPC Click cannot be used as a shower floor. Remove spacer blocks after laying. Finish the wall with a neat skirting board. Your floor can be walked on immediately and can be loaded after laying.

Maintenance

A LVT/SPC Click floor is easy to maintain. Easy Cleaner and Easy Protect, are specially developed for LVT/SPC Click floors.

Daily

The greatest enemies of any floor are dust, sand and grit. Daily vacuuming or wiping with a soft brush is often enough to remove them. Depending on the use, clean the floor regularly with Easy Cleaner. Do not use aggressive or abrasive cleaning agents. Wipe away stains immediately and mop the spot with clean warm water.

Periodically

LVT/SPC Click is provided with a protective PU top layer. Use and intensive cleaning will affect this top layer. That is why we recommend carrying out periodic maintenance. When used in the living room at least 1x per year and in lighter applications such as in a bedroom 1x per 2 years. The maintenance consists of thoroughly cleaning the floor with Easy Cleaner and applying a new PU protective layer with Easy Protect. Dirt, small scratches and stripes on shoe soles can also be removed more easily after this treatment.

Preventive tips

Prolonged, direct sunlight can damage your floor. Use curtains to minimise direct sunlight during peak sunshine. Use a good doormat to prevent moisture and dirt from getting in. Avoid rubber floor mats and black furniture caps. Provide chair legs and other furniture with good quality felt caps and do not drag heavy objects across the floor. For furniture on castors, make sure that these castors are suitable for a flat vinyl floor covering (no rubber). A floor mat under the office chair is recommended to prevent damage.

Warranty conditions

LVT/SPC Click has been produced with care. Should, despite this, hidden material and/or manufacturing faults occur within the period indicated on the packaging after the date of purchase, the following warranty conditions apply:

- If, after opening the packaging, you notice visible defects in the product, you must report this to your purchase address before processing.
- We guarantee defects that were already present at the time of delivery, but not immediately visible to everyone.
- The guarantee applies if the floor has been installed and maintained in your home in accordance with the enclosed instructions; it must be possible to assess the floor in its installed condition.
- Warranty only applies if the size of the used, cohesive surface is clearly visible and at least 2m² large. The damage is at least 2cm².
- Any complaints must be reported in writing to your purchase address within the statutory 60 days after discovery, with the receipt and these conditions enclosed. Write the production number directly on your receipt. In the event of an unjustified complaint, your supplier has the right to charge the call-out charges as well as all other costs incurred in connection with the unjustified complaint.
- If the complaint is found to be justified, the residual value of the damaged parts of your floor will be reimbursed during the guarantee period. The residual value will be determined on the basis of the remaining duration of the guarantee period of your floor.
- Do not wear high stiletto heels/high heels, these can damage your floor.
- Use felts under the chair legs and regularly remove dust and dirt from the felts.
- The guarantee does not apply to damage that exceeds the current value of the tiles and/or strips supplied.
- You must maintain your floor with the LVT/SPC Click maintenance products.
- In the event of a dispute arising from this guarantee agreement, each of the parties will call upon an independent expert, who will issue a binding opinion. The costs of this advice will be borne by the unsuccessful party. Where this clause is applied, these costs must be agreed in advance in writing between the parties.
- If a complaint is found to be justified, the residual value of the damaged parts of your floor will be reimbursed during the guarantee period. The residual value will be determined on the basis of the remaining duration of the guarantee period of your floor.

Warranty null and void:

- In the event of damage as a result of abrasion, damage and tearing of the wear surface as a result of improper use, falling objects, ingress of sand and/or processing with a sharp object.
- By rough and/or injudicious use.
- By any other negligent use of the product concerned.
- If, prior to machining, it could be established that the product had a defect.
- These guarantee conditions do not affect your legal rights and obligations. CE14041 and EN649 Operating class 23/33 (intensive residential use)